

RIZING
a wipro company

Fashion Suite™

Pre-Configured Accelerator for
SAP S/4HANA® Fashion and Vertical Business



Fashion Suite™ - at a glance



Available on the latest release of
SAP S/4HANA®
**Fashion and Vertical
Business**

20+ **Customers
Globally &
Counting**

The Most Proven Accelerator in the Market



50-60%

Coverage of typical business
process requirements as

Out-of-the-box Functionality

50+

Pre-configured processes

Based on our Fashion Industry
Knowledge and experience working
with 70+ customers

**Supports a Future Reference Solution based
approach to implementation**



Documentation

Best practices documentation including
business process and solution
documentation, technical and
functional documents, and test scripts

**Drives a
templated
"WHY NOT"
approach**

60+

Fiori Applications

Proven Accelerator for SAP S/4HANA for Fashion



PROVEN KNOWLEDGE

Built leveraging our in-depth knowledge as a close collaborator on the development of SAP solutions to the fashion industry and our 15+ year track record.



TESTED AND IMPLEMENTED

Used by multiple fashion companies to accelerate their implementations of SAP S/4HANA for Fashion and Vertical Business.



BEST-IN-CLASS PROCESSES

Incorporates leading practices across the supply chain, planning, finance, retail, procurement, cross-inventory consumption & more.



REDUCES COST

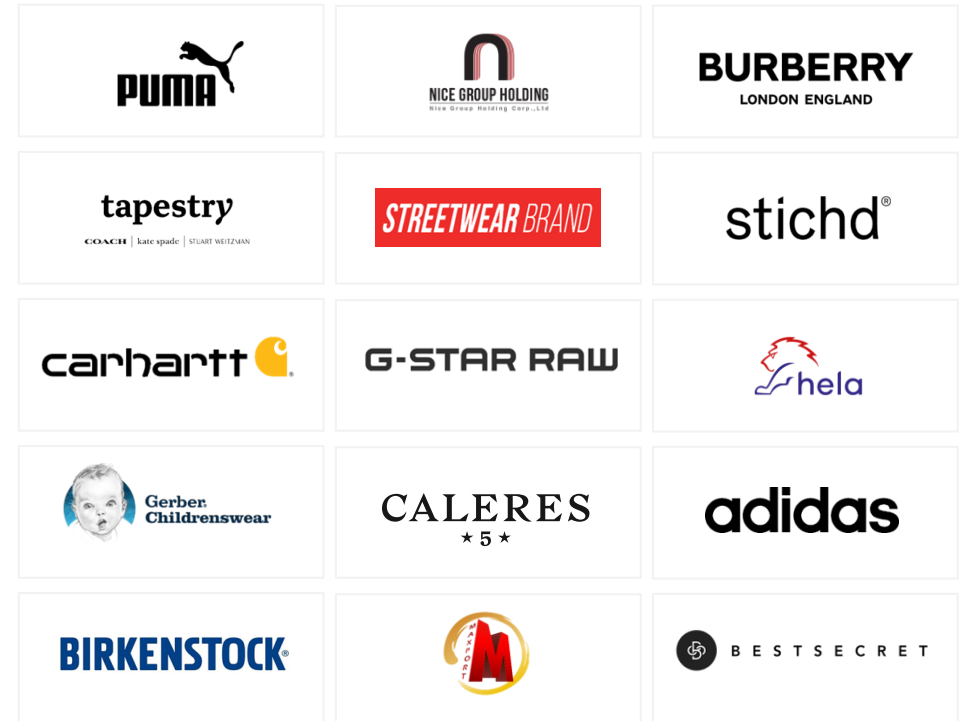
Available on a cloud subscription model to enable fast-growing fashion brands to get the best-in-class technology at a fraction of the cost.



LESS EFFORT

Reduces implementation effort by 30-40% and minimizes internal resource requirements

Trusted by Leading Fashion Retail Brands



Pre-built Business Processes on Fashion Suite™

Master data

- Article Master *
- Business Partner (Vendor Master)
- Business Partner (Customer Master) *
- Site Master
- Merch. Categories/Hierarchies
- Listings & Assortments
- Value Added Services
- Seasons
- Customer Listings & Exclusion
- Purchasing Master data
- Production Master data (BOM, Routing, Production versions)

Retail Operations

- Pricing & promotion maintenance
- Store Allocation & Replenishment
- Store Operations *
- Store to DC Returns
- Store sales, Returns & Financials
- Store order management and Distribution
- Store connectivity for POSDTA

Order to Cash

- Customer order management *
- Contracts & Call offs *
- Advance ATP/ Supply Assignment *
- Outbound Shipping *
- Credit Management *
- Wholesale Pricing
- Wholesale Invoicing *
- Wholesale Returns
- E-com Order Management
- Direct Shipment orders (Third Party Order) & Purchase to Orders
- Consignment Processing

Manufacturing

- Production Order Management *
- Production Order Execution *
- Production planning *
- External Processing

Finance

- General Ledger
- Accounts Receivable
- Accounts Payable
- Fixed Assets
- Product Costing & Inventory Valuation

Procure to Pay

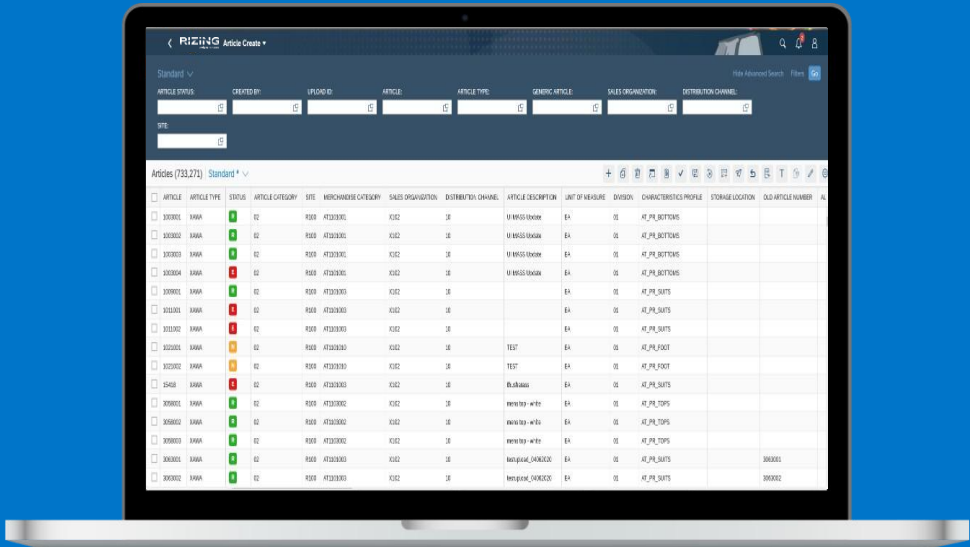
- Forecasts (PIR)/ Material Requirements Planning
- Direct Procurement (Merchandise) *
- Inbound Logistics & Receiving
- Inventory Management *
- Vendor Invoices
- Intra & Inter company transfers
- Stock Protection
- Taxes & Statutory Reporting
- Cash & Liquidity Management *
- Indirect Procurement
- Controlling and profitability analysis

Add-on Tool

Master Data Accelerator™

A Rizing Solution

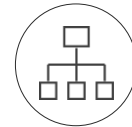
Convenient, fast, and accurate maintenance of large fashion master data, with proper authorization for each department responsible and integrating data from existing/legacy systems



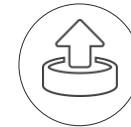
Simplified maintenance for product (Materials), pricing (Info Records), supplier data in SAP (Source List), vendor data, and customer data



Minimize data maintenance for common or logically manageable data via pre-defined values, business rules, and routines



Easy to maintain multiple roles or specific role for users with different authorizations to avoid unauthorized data maintenance or access



Ability to upload data from legacy systems



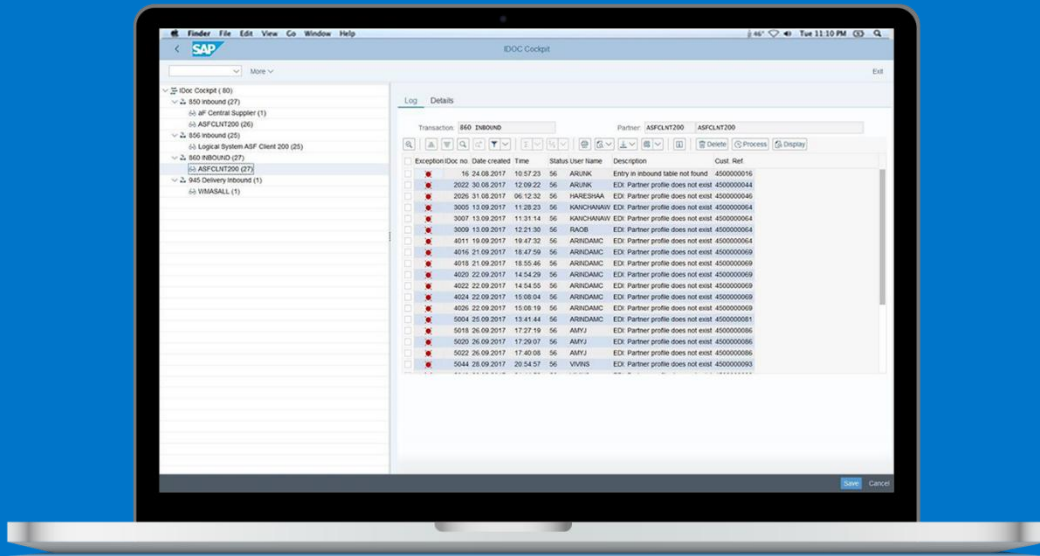
Ability to generate master data reports

Add-on Tool

IDoc Cockpit™

A Rizing Solution

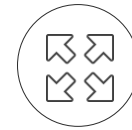
The IDoc Cockpit provides a user-friendly SAP interface to manage all Inbound IDocs while providing the capability to view all Outbound IDocs.



One transaction for all IDoc troubleshooting



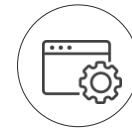
Authorization at message type & partner level allowing user-level access



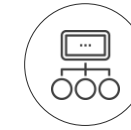
Customizable screens with additional developments



Pre-configurable screens, tables, and fields with drill down facility allow you to act quickly without referring the documentation



Adding new messages to the IDoc Cockpit can be done with configuration without extensive coding



A tool that provides a "Mass Change" (select all) option for Inbound IDoc segments and a "View" option for Outbound IDocs



User-friendly screens and labels to check IDoc data

SAP Fiori Apps on Fashion Suite™

60+

SAP Fiori Apps

for key functionalities – simplifying the user experience and driving efficiencies

Manage Sales Orders

Standard

Search

Sales Order: Sold-to party: Customer Reference: Req'd Delivery Date: Overall Status: Document D

Sales Orders (215) Standard

Sales Order	Sold-to party (Buyer)	Customer Reference	Req'd Delivery Date	Overall Status	Net Value
221	Indirect Supplier (100010)	TEST_EDL_FSHORDER03LH	04.05.2018	Open	98,00 USD
216	Indirect Supplier (100010)		04.05.2018	Open	0,00 USD
216	Indirect Supplier (100010)	Test_CH_SO_02	04.05.2018	Open	0,00 USD
214	Indirect Supplier (100010)	Test_CH_SO_01	26.04.2018	Open	0,00 USD
213	NIKE SUB (100021)	sd4	24.04.2018	Open	1,500,00 USD
212	NIKE SUB (100021)	sd3	24.04.2018	Open	0,00 USD
211	NIKE SUB (100021)	sd2	24.04.2018	Open	120,00 USD



HARESHAA

Sign Out

App Finder Settings Edit Home Page

Recent Activity Frequently Used

Look Up Retail Products App Just now

Back Order Processing Contract Management Manage Store Product Allocation Store Inventory

Count Stock Perform Store Walk-Through Adjust Stock

Store Operations

Look Up Retail Products Order Products Receive Products Print Labels Maintain Store

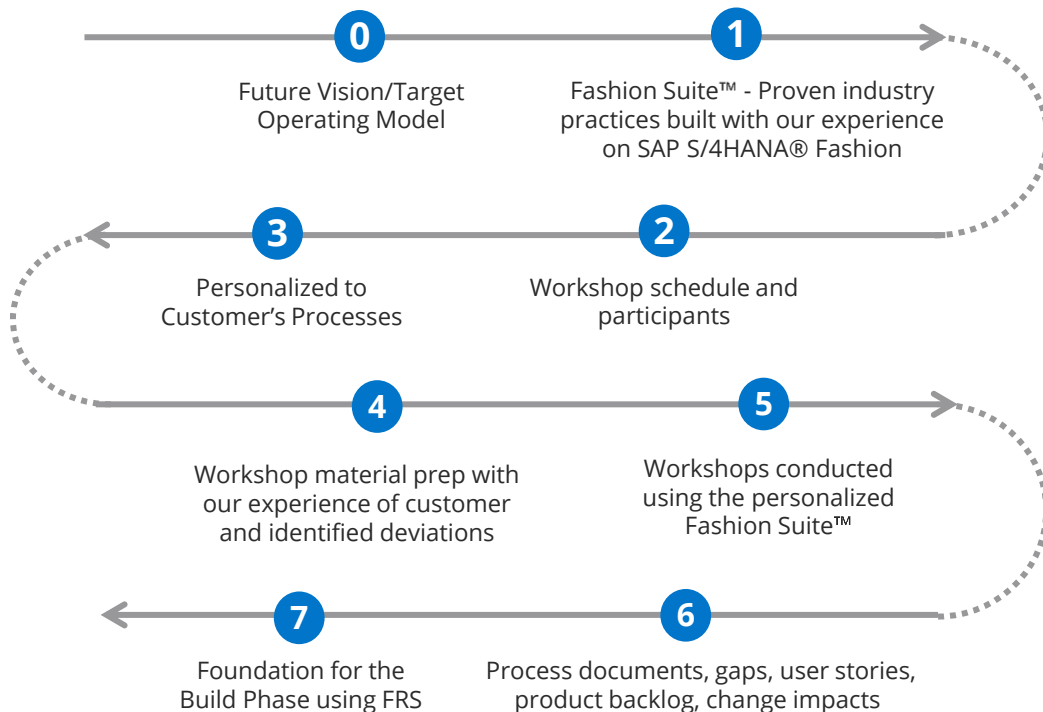
Store Transfers

Transfer Stock Transfer Products Create Transfer

Building a Future Reference Solution leveraging Fashion Suite™

Our Future Reference Solution (FRS) is designed to provide fashion brands with a reusable, personalized template of SAP S/4HANA® for Fashion, leveraging our rapid-deployment solution - Fashion Suite™.

Incorporating our knowledge of SAP S/4HANA for Fashion and proven practice in the industry to support a why not approach, FRS helps reach a desired “to be” environment more efficiently and effectively, to drive your ERP implementation and augment your brand’s uniqueness during the design and implementation phase.



What You Get

- Global High-Level Design Template
- High-Level Design Walkthrough
- Reference Process Documents
- Personalized Reference System
- Gap List and Development list
- Change Impact Screening and Heat Map
- Product Backlog, User Stories, and Sprint Planning

Business Value

- Global High-Level Design Template: A Platform to drive towards adopting proven industry practices
- Helps reach a common understanding of To Be “best practice”
- Draws out key convergence and divergence opportunities
- Helps refine key target operating model based on system capabilities
- Provides early exposure and understanding of SAP Fashion processes
- Potential change management considerations
- Provides a solid foundation for acceleration and quality of implementation

Act Now

Talk to us today to learn how you can minimize risk, accelerate processes, and increase agility with SAP S/4HANA for Fashion.

Our strategic assessment will help identify new business opportunities to maximize ROI and deliver a high-level road map that details the business impact and priorities you need to consider prior to moving to SAP S/4HANA for Fashion.

[Contact Us →](#)





© 2024 Rizing LLC or a Rizing LLC affiliate company. All rights reserved. This document is provided for information purposes only, and the contents are subject to change without notice. This document is not warranted to be error-free, nor subject to any other warranties or conditions, whether expressed orally or implied in law, including implied warranties and conditions of merchantability or fitness for a particular purpose. We specifically disclaim any liability with respect to this document, and no contractual obligations are formed either directly or indirectly by this document. This document may not be reproduced or transmitted in any form or by any means, electronic or mechanical, for any purpose, without our prior written permission. Rizing, Rizing HCM, and other Rizing products and services mentioned herein as well as their respective logos are trademarks or registered trademarks of Rizing LLC or a Rizing affiliate company in the United States and other countries. All other product and service names mentioned are the trademarks of their respective companies.